

A²DRI™ DATA RECORDER/INJECTOR



HIGH-SPEED DEVICE TO EXPAND THE DIGITAL CHAIN PRIOR TO RF GENERATION

Textron Systems' A²DRI™ is a modular digital expansion unit which complements the A²PATS® System Product Line by enhancing core simulation capability through the integration of additional processing hardware. The A²DRI is in its 3rd generation and utilizes the latest cutting-edge commercial technology to provide Data Recording and Analysis, NEWEG PDW Injection, Receive Antenna Beam Steering, External RF, Polarization Switching, RF Scoring, and Increased Pulse Density. The A²DRI can be configured to offer higher throughput of data, future expansion for your simulator. The high-speed, 19in rack mountable A²DRI is commercially available and can be configured to support several test requirements that seamlessly complements the A²PATS family of products.

TextronSystems.com



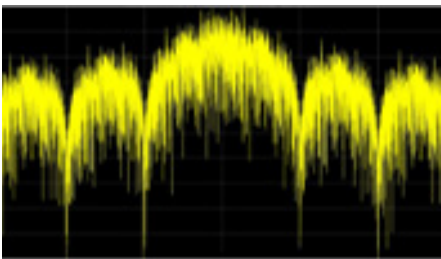
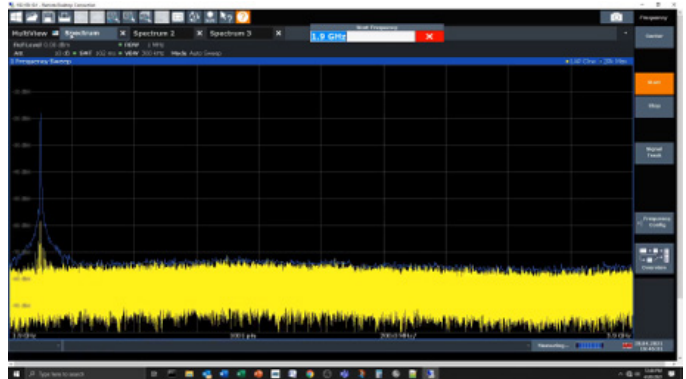
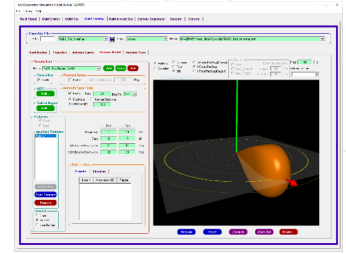
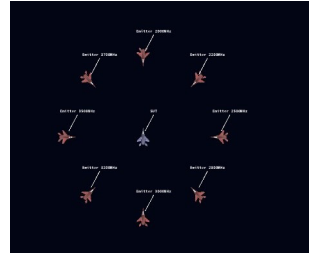
TEXTRON Systems

► PUSHING PAST POSSIBLE

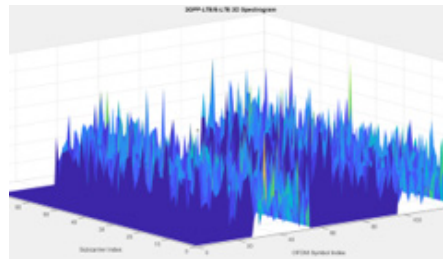
3RD GENERATION DESIGN USES CUTTING-EDGE TECHNOLOGY

KEY FEATURES & BENEFITS

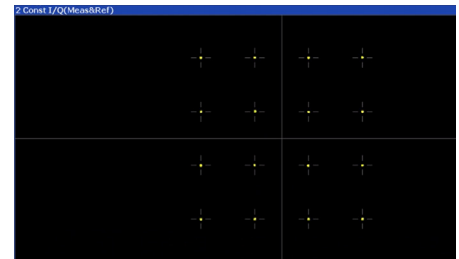
- > Store pulse data to an onboard RAID array and analyze data within the SimUI GUI or export data to a CSV file.
- > Apply receiver effects to an incoming stream of NEWEG PDWs to generate modulated RF output.
- > Simulate active electronically scanned arrays and mechanical receiver antenna scans.
- > Geolocate and modulate user-injected analog RF signals into the simulation in near real-time.
- > Quickly alternate between multiple antenna polarization vectors in a port.
- > Compare actual RF output to exact digital pulse data.
- > View simulation details, statistics and debug options in GUI.
- > Scale up scenario density enabling more signals, modes, platforms and receivers.
- > Compatible with COMINT and ELINT Signals.



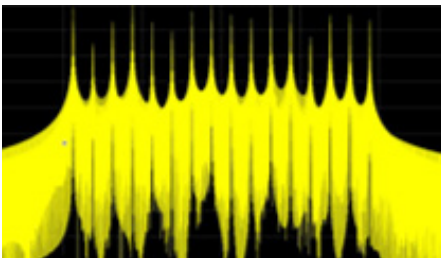
PULSE DATA RECORDING AND ANALYSIS



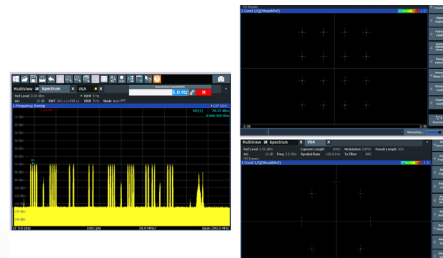
INCREASED PULSE DENSITY



DYNAMICALLY ENHANCED STREAMING I&Q



PDW INJECTOR AND CONVERTER



RECEIVE ANTENNA BEAM STEERING



EXTERNAL RF

COMMERCIALLY AVAILABLE A²DRI PART NUMBERS:

40520-41000-21, 40520-41000-40, 40520-43000-10, 40520-43000-201, 40520-43000-202, 40520-43000-203, 40520-43000-204, 40520-43000-205, 40520-43000-206, 40520-43000-207, 40520-43000-208